

Procedure 7.15 - Replacing A Stairarm Belt

Removing the Stairarm Belt

If you are removing only one stairarm belt, remove only one cover. It is not necessary to remove both covers unless you are removing both stairarm belts.

1. Remove the cover necessary to access the stairarm belt you are removing as described in Procedure 7.1.

WARNING

Before continuing with this procedure, review the Warning and Caution statements listed in Section One, Things You Should Know.

2. Press down the stair arm with one hand. With your other hand, grasp and pull the end of the stairarm belt connected to the return spring. Release the stair arm. Remove the belt from the pulley and belt idler (refer back to Diagram 7.10).
3. Remove the spring from the grooved belt clamp.
4. Remove the fasteners that hold the halves of the grooved belt clamp together (see Diagram 7.12).
5. Remove the fasteners that secure the belt clamp to the underside of the pedal. Set aside the belt clamp and stairarm belt.
6. If you are replacing one stairarm belt only...

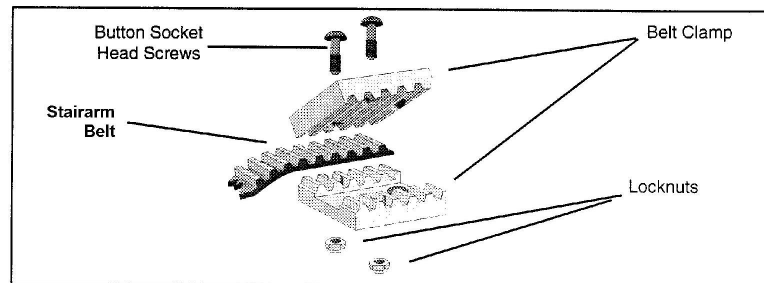
THEN...

Continue with the next step.

OTHERWISE...

Repeat Steps 2 through 5 for the second stairarm belt; then continue with the next step.

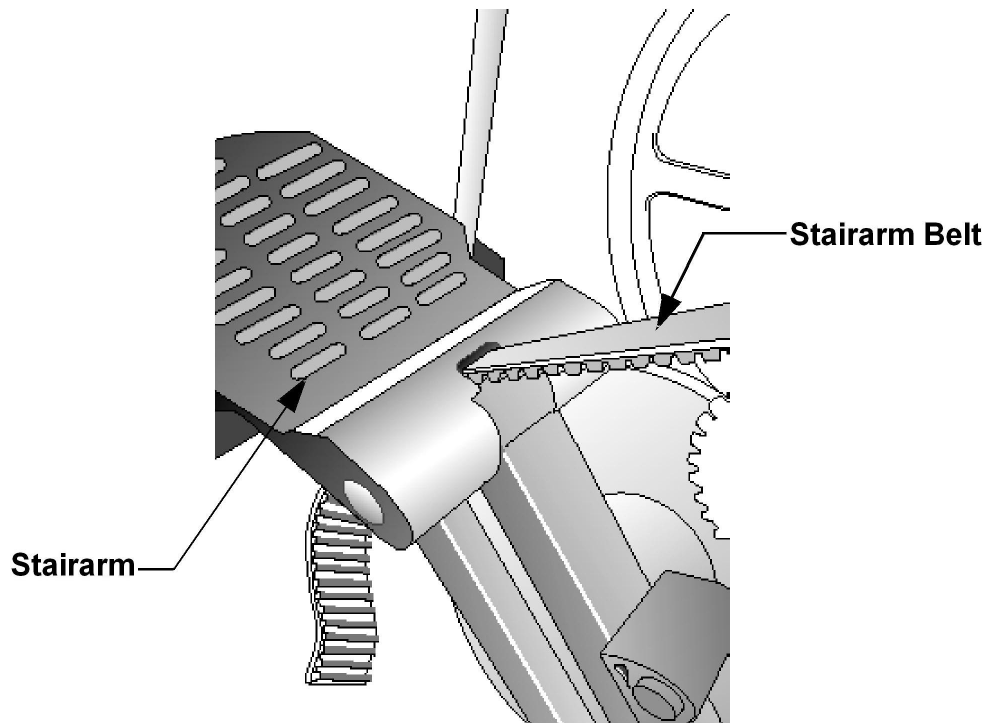
Diagram 7.12 - Stairarm Belt Clamps



Replacing the Stairarm Belt

7. Route one end of the stairarm belt through the front of the pedal (see Diagram 7.13).

Diagram 7.13 - Routing the Stairarm Belt

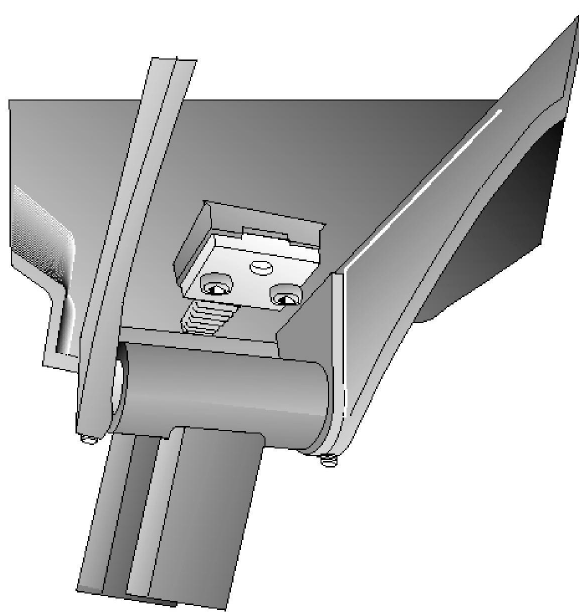


8. Place and hold the end of the belt against the belt clamp weldment on the underside of the pedal. The end of the belt should be flush with the end of the clamp.
9. Place the belt clamp against the belt positioned in the previous step.

Note:

Hold the belt clamp against the belt and slotted area on the underside of the pedal when you perform the next step.

10. Install the fasteners that secure the belt clamp to the pedal (see Diagram 7.11).
11. Place and hold the other end of the belt against one half of the grooved belt clamp. The end of the belt should be flush with the hole in the clamp.
12. Place the remaining side of the grooved belt clamp against the belt positioned in the previous step.

Diagram 7.14 - Underside of Stairarm Pedal**Note:**

Hold the sides of the grooved belt clamp together when you perform the next step.

13. Install the fasteners that hold the sides of the grooved belt clamp together.
14. Place the return spring in the grooved belt clamp. Position the spring as shown in Diagram 7-14.
15. Lift the stair arm assembly from the frame weldment. Grasp the stairarm belt and lift it over the toothed pulley. Route the belt under the idler pulley
16. If you are replacing only one stairarm belt...

THEN...

Continue with the next step.

OTHERWISE...

Repeat Steps 7 through 15 for the second stairarm belt; then continue with the next step.

17. Check the operation of the climber as described in Section Four, then replace the cover as described in Procedure 7.1.